

Disaster-Preparedness Map Of Nakano City

Shelters

Elementary and middle schools have been mainly designated as "shelters" in the city and these will be used as bases for relief and rescue operations in the event of a disaster.

At the shelters, victims will be accommodated, injured people treated, information to verify safety collected and provided, supplies distributed to victims, and water and food provided.

For these purposes, the following are provided: wireless communications, a well, a generator, cooking sets, floodlights, a water purifier, emergency medical supplies, stretchers, food, etc.

Emergency shelters have been designated, and assigned according to Bosaikai areas.

Shelters List As of April 2024

Area	Institution	Address	Telephone
Minami-Nakano	Minamidai Elementary School	Minamidai 4-4-1	3381-7257
	Minami-Nakano Junior High School	Minamidai 5-22-17	3381-7277
	The Secondary Education School Attached to the Faculty of Education,the University of Tokyo	Minamidai 1-15-1	5351-9050
Yayoi	Minamino Elementary School	Yayoicho 4-27-11	3381-7250
	Nambu Sukoyaka Welfare Center and other facilities	Yayoicho 5-11-26	3382-1750
	Nakano-Hongo Elementary School	Yayoicho 1-25-1	3299-1058
Tobu	Nakano-Daiichi Elementary School	Honcho 3-16-1	3372-2326
	Nakano Higashi Junior High School and other complex facilities	Chuo 1-41-4	3362-5236
	Tonoyama Elementary School	Chuo 1-49-1	3363-0461
Nabeyoko	Hosen Gakuen	Chuo 2-28-3	3371-7103
	Yato Elementary School	Nakano 1-26-1	3361-3645
	Daini Junior High School	Honcho 5-25-1	3382-7151
Momozono	Nitobe Bunka Gakuen	Honcho 6-38-1	3381-0196
	Chubu Sukoyaka Welfare Center	Chuo 3-19-1	3367-7788
	Toka Elementary School	Chuo 5-43-1	3381-7251
Showa	Momozono-Daini Elementary School	Nakano 6-13-1	3363-0661
	Nakano Junior and Senior High School Attached to Waj University	Higashi-Nakano 3-3-4	3362-8704
	Otsume-Nakano Junior High School/High School	Kamitakada 2-3-7	3389-7211
Kamitakada	Hakuo Elementary School	Kamitakada 1-2-28	3389-0561
	Former Kamitakada Elementary School	Kamitakada 5-35-3	
	Daigo Junior High School	Kamitakada 4-28-1	3389-2341
Arai	Nakano Junior High School	Nakano 4-12-3	3389-1471
	Reiwa Elementary School	Arai 4-19-26	3389-1461
	Former Numabukuro Elementary School	Numabukuro 3-13-2	
Numabukuro	Midorino Junior High School	Maruyama 1-1-19	3386-5423
	Dainana Junior High School	Egota 2-9-11	3389-4171
	Ehara Elementary School	Eharacho 1-39-1	3951-5880
Egota	Egota Elementary School	Egota 2-13-28	3385-0411
	Heiwanomori Elementary School	Arai 3-29-1	3389-1451
	Metropolitan Nakano High School of Technology	Nogata 3-5-5	3385-7445
Nogata	Kitahara Elementary School	Nogata 6-30-6	3330-2411
	Midorino Elementary School	Maruyama 1-17-1	3389-2351
	Keimei Elementary School	Yamatotocho 1-18-1	3330-2325
Yamato	Meiwa Junior High School	Wakamiya 1-1-18	3330-5325
	Mihato Elementary School	Yamatotocho 4-26-5	3330-1425
	Metropolitan Saginomiya High School	Wakamiya 3-46-8	3330-0101
Saginomiya	Saginomiya Sports Community Plaza	Shirasagi 3-1-13	3337-1771
	Former Nishi-Nakano Elementary School	Shirasagi 3-9-2	
	Former Saginomiya Elementary School	Saginomiya 3-31-4	
Kamisaginomiya	Saginomori Elementary School	Saginomiya 4-7-3	5364-7135
	Kita-Nakano Junior High School	Kamisaginomiya 5-7-1	3999-3415
	Musashidai Elementary School	Kamisaginomiya 5-1-1	3999-1655
	Kamisaginomiya Elementary School	Kamisaginomiya 1-24-36	3926-6381

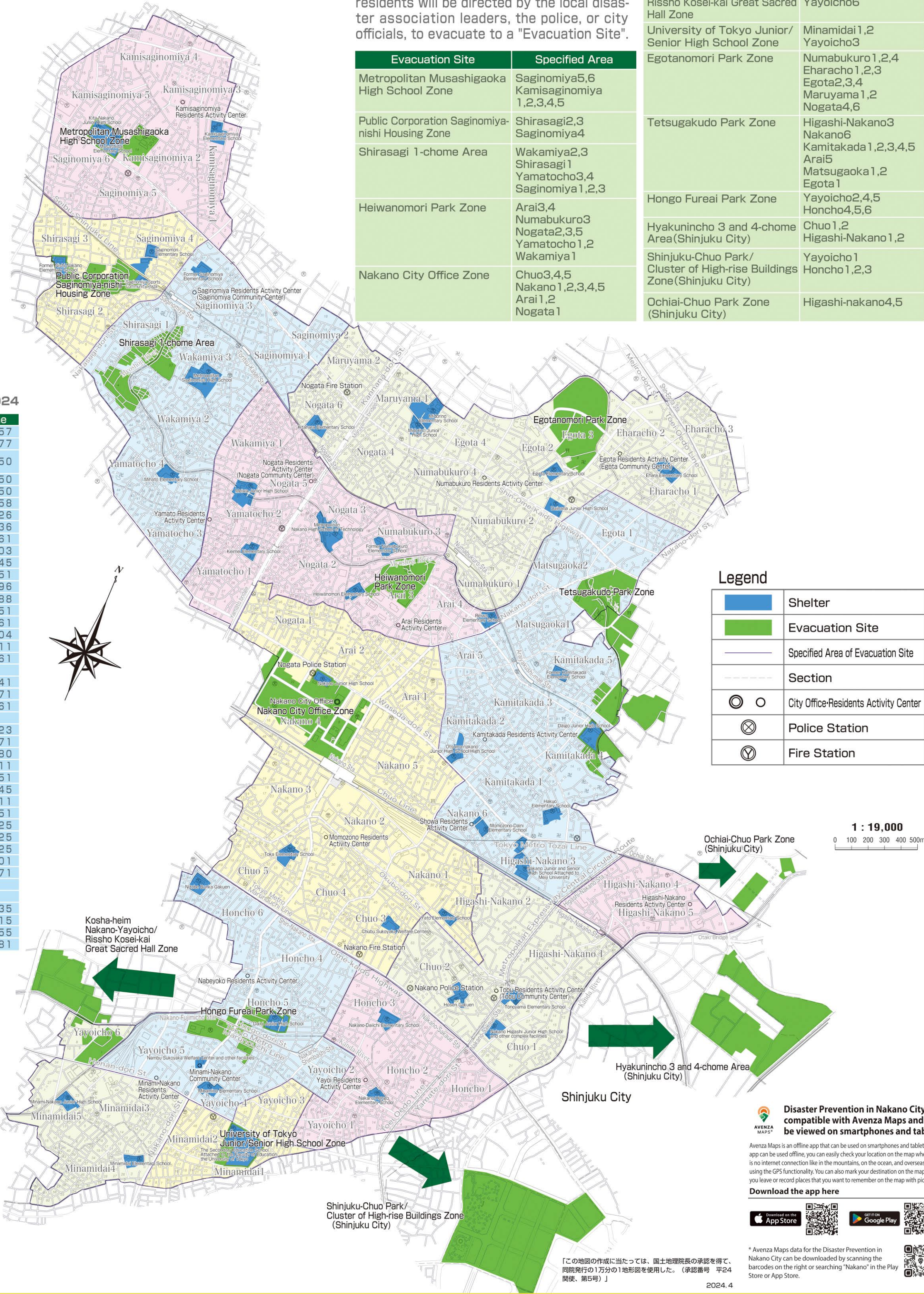
Shelters may change due to consolidations of schools. Please check out the website of Nakano City for the latest information about shelters.

Evacuation Site

Should it become dangerous to remain in a locality (e.g. due to the spread of fire), residents will be directed by the local disaster association leaders, the police, or city officials, to evacuate to a "Evacuation Site".

Evacuation Site	Specified Area
Metropolitan Musashigaoka High School Zone	Saginomiya5,6 Kamisaginomiya 1,2,3,4,5
Public Corporation Saginomiya-nishi Housing Zone	Shirasagi2,3 Saginomiya4
Shirasagi 1-chome Area	Wakamiya2,3 Shirasagi 1 Yamatotocho3,4 Saginomiya1,2,3
Heiwanomori Park Zone	Arai3,4 Numabukuro3 Nogata2,3,5 Yamatotocho1,2 Wakamiya1
Nakano City Office Zone	Chuo3,4,5 Nakano 1,2,3,4,5 Arai1,2 Nogata 1

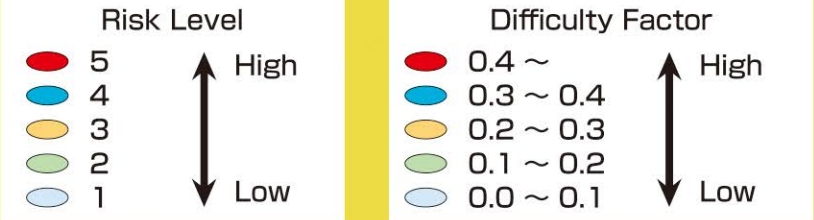
Evacuation Site	Specified Area
Kosha-heim Nakano-Yayoicho/Rissho Kosei-kai Great Sacred Hall Zone	Minamidai3,4,5 Yayoicho6
University of Tokyo Junior/Senior High School Zone	Minamidai1,2 Yayoicho3
Egotanomori Park Zone	Numabukuro1,2,4 Eharacho1,2,3 Egota2,3,4 Maruyama1,2 Nogata4,6
Tetsugakudo Park Zone	Higashi-Nakano3 Nakano6 Kamitakada1,2,3,4,5 Arai5 Matsugaoka1,2 Egota 1
Hongo Fureai Park Zone	Yayoicho2,4,5 Honcho4,5,6
Hyakunincho 3 and 4-chome Area(Shinjuku City)	Chuo1,2 Higashi-Nakano1,2
Shinjuku-Chuo Park/Cluster of High-rise Buildings Zone(Shinjuku City)	Yayoicho 1 Honcho 1,2,3
Ochiai-Chuo Park Zone (Shinjuku City)	Higashi-nakano4,5



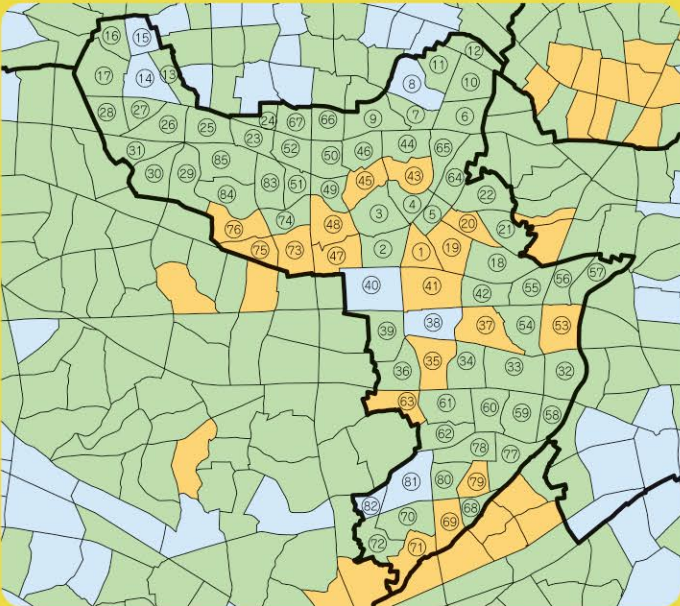
Susceptibility of local areas to earthquake damage

* The local risk level has been assessed by ranking 5,192 areas in Tokyo with a risk level of 1 to 5. (Nakano City has 85 areas.)

According to Tokyo Earthquake Measures Byelaw Article, the Susceptibility of local areas to earthquake damage has been conducted and the results have been announced by Tokyo Metropolitan Government about every five years since 1975. In September 2022 the ninth results of this survey were announced. This survey takes into account the emergency response difficulty factor, in addition to the risk of building collapse and fire, how hard the evacuation, fire extinguishing, and rescue are also considered when a disaster occurs to determine the overall risk. (Corresponds to earthquake danger measurement study results list on reverse of page.)

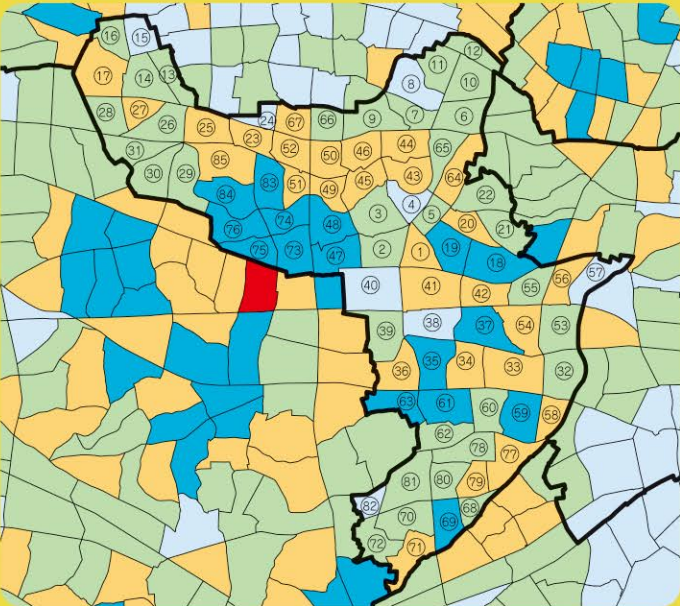


① Building collapse risk



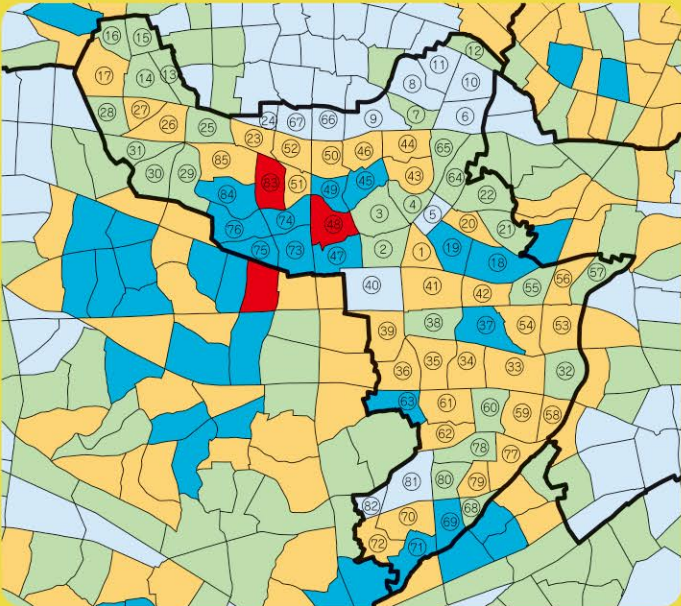
The degree of risk of building collapse caused by ground motion from an earthquake.

② Fire risk



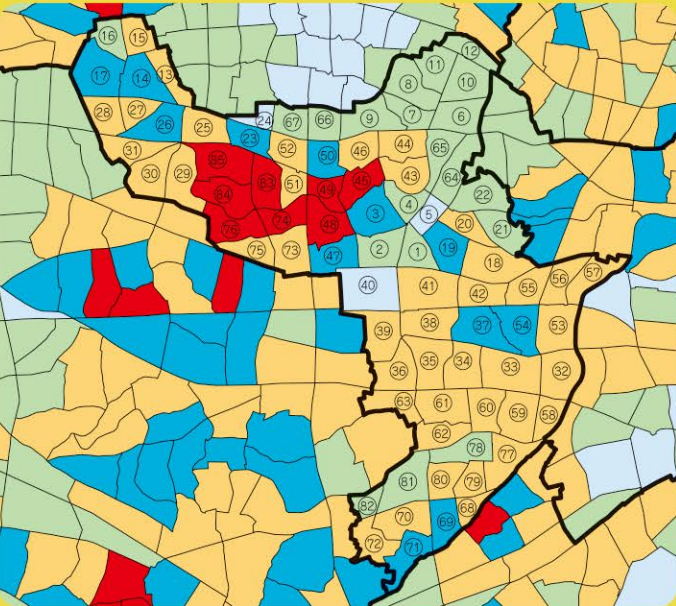
The degree of risk from the spread of building fires that occur due to ground motion caused by an earthquake.

③ Combined risk



Groups risk of building collapse and fire, and emergency response difficulty into one index and ranks them with 5 levels.

④ Emergency Response Difficulty Factor



The difficulty of emergency response (evacuation, putting out fires, and so forth) when a building catches fire or collapses due to an earthquake.